

Pain Catastrophizing in Chronic Migraine patients receiving Eptinezumab Treatment

Alessandra Parisi¹, Licia Grazzi¹, Alberto Raggi², Giulia Regonesi¹, Montisano Danilo Antonio¹

¹ Headache Center, Neuroalgology dpt - Neurological Institute Carlo Besta IRCCS Foundation, Milan, Italy;

² Neurology, Public Health and Disability Unit - Neurological Institute Carlo Besta IRCCS Foundation, Milan, Italy;

OBJECTIVE

This study aimed to evaluate changes in pain catastrophizing over time, from baseline to 9 months, in migraine patients undergoing Eptinezumab treatment.

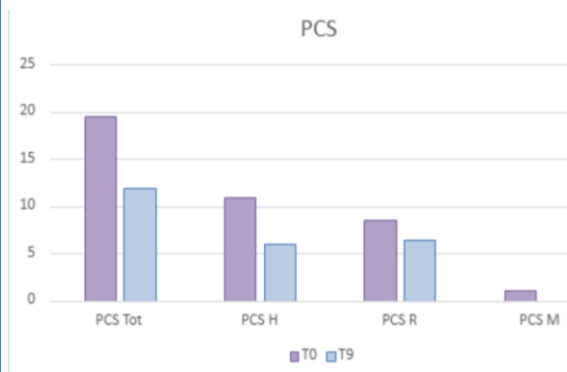
CONCLUSIONS

- Baseline Pain Catastrophizing levels in our sample of chronic migraine patients were close to the upper limit of the normal range.
- By 9 months, significant improvements were observed in overall Catastrophizing, particularly in Helplessness & Rumination subscales.

METHODS

The **Pain Catastrophizing Scale (PCS)** was used to evaluate the negative thoughts and emotions relating to pain experienced by 34 patients.

RESULTS



Populations	
Age	49.5 ± 12.3
Sex	33 F – 1 M
Treatment period	9 months

PCS	PCS Tot	DS	PCS H	DS	PCS R	DS	PCS M	DS
T0	19,5	7.93	11	4.10	8,5	3.84	1	1,28
T9	12	10.17	6	4.30	6,5	5.13	0	1,75

