

Observed Efficacy of Efgartigimod in Generalized Myasthenia Gravis Across Patient Subgroups in the ADAPT-SC+ Study

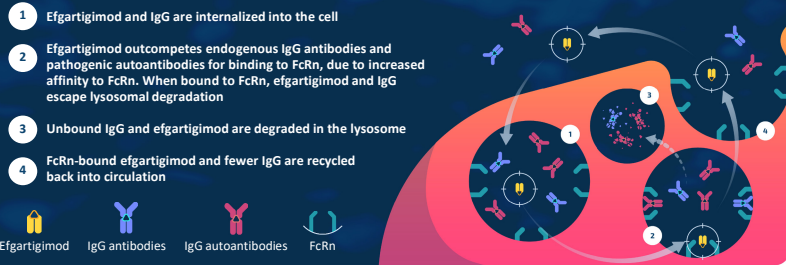
Srikanth Muppidi,¹ Laura Fionda,² Tuan Vu,³ Edward Brauer,⁴ René Kerstens,⁴ Kimiaki Utsugisawa,⁵ Andreas Meisel,⁶ and the ADAPT-SC+ Study Group

¹Stanford Health Care, Palo Alto, California, USA; ²Neuromuscular and Rare Disease Centre, Mental Health and Sensory Organs (NESMOS), University of Rome, Rome, Italy; ³University of South Florida Morsani College of Medicine, Tampa, Florida, USA; ⁴argenx, Ghent, Belgium; ⁵Hanamaki General Hospital, Hanamaki, Japan; ⁶Charité – Universitätsmedizin Berlin, Germany

BACKGROUND | METHODS

- Efgartigimod is a human IgG1 antibody Fc fragment that has been engineered for increased affinity to FcRn compared to endogenous IgG and is uniquely composed of the only part of the IgG antibody that normally binds FcRn^{1,2}
- By blocking FcRn, efgartigimod selectively reduces IgG antibodies and pathogenic autoantibodies, and does so without:^{1,3-5}
 - Impacting antibody production (including other Ig antibodies) or other parts of the immune system
 - Decreasing albumin levels
 - Increasing LDL cholesterol levels
- Efgartigimod PH20 SC is a coformulation of efgartigimod and recombinant human hyaluronidase PH20 that allows for rapid (30–90 s single injection) SC administration⁶

Efgartigimod Mechanism of Action^{1,7,8}



RESULTS

- 184 participants rolled over from ADAPT-SC (n=105) and ADAPT+ (n=79)
- 179 participants (141 AChR-Ab+ and 38 AChR-Ab-) received ≥1 dose of efgartigimod PH20 SC in ADAPT-SC+ through December 2022, with a mean (SD), median, and maximum study duration for all participants of 412.9 (104.52), 451, and 585 days, respectively
- Participants experiencing injection site reaction events decreased over subsequent cycles; from 34.6% (n=62/179) in cycle 1 to 10.3% (n=7/68) in cycle 9
- No injection site reactions were grade ≥3, serious, or resulted in treatment discontinuation

TABLE 1 Participant Demographics and Baseline Characteristics Overall and AChR-Ab+ Population

	Efgartigimod PH20 SC Overall (n=179)	Efgartigimod PH20 SC AChR-Ab+ (n=141)
Age, years, mean (SD)	50.7 (15.5)	51.0 (15.9)
Sex, female, n (%)	119 (66.5)	90 (63.8)
Weight, kg, median (Q1–Q3)	76.9 (64.0–89.8)	77.0 (63.0–92.0)
AChR-Ab+, n (%)	141 (78.8)	141 (100)
Total MG-ADL score, mean (SD)	7.9 (3.4)	7.6 (3.4)
Total MG-QoL15r score, mean (SD)	13.6 (6.9)	13.1 (6.8)
MG therapy during the first year, n (%)		
Any steroid	128 (71.5)	103 (73.0)
Any NSIST	89 (49.7)	67 (47.5)
Any AChEI	150 (83.8)	122 (86.5)
Steroid + NSIST	69 (38.5)	53 (37.6)
AChEI only	29 (16.2)	23 (16.3)

FIGURE 1 ADAPT and ADAPT-SC+ Trial Designs

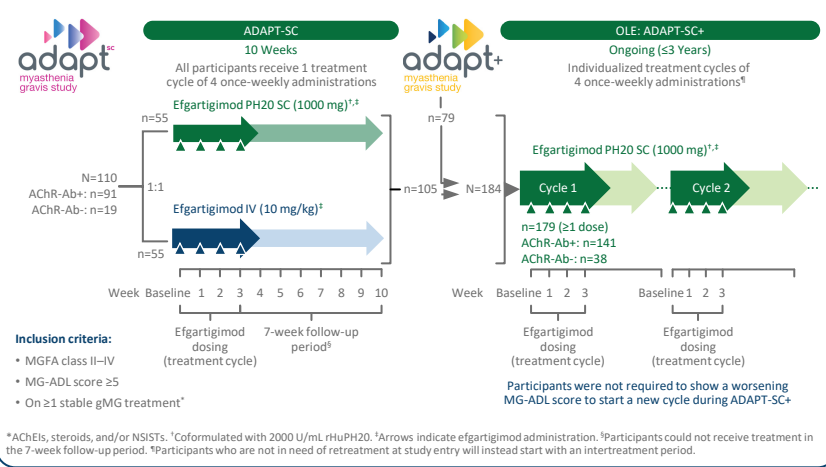
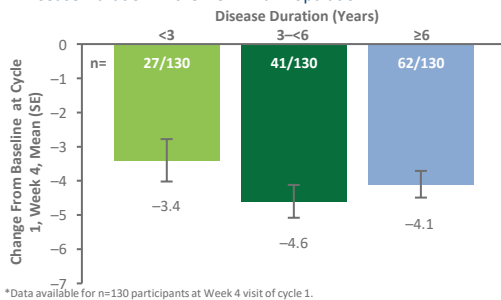


TABLE 2 Summary of TEAEs Overall Population

	Efgartigimod PH20 SC (n=179; PYFU=193.4)	
	ER*	n (%)
Any TEAE	9.0	152 (84.9)
Any TEAE grade ≥3	0.4	36 (20.1)
Any serious TEAE	0.3	33 (18.4)
Any injection site reaction	3.2	82 (45.8)
Fatal event†	<0.1	4 (2.2)
Discontinued study treatment owing to TEAEs‡	<0.1	4 (2.2)
Most commonly observed TEAEs§		
Injection site erythema	1.7	52 (29.1)
COVID-19	0.2	40 (22.3)
Headache	0.6	36 (20.1)
Nasopharyngitis	0.2	28 (15.6)
Diarrhea	0.2	24 (13.4)
Injection site pain	0.2	21 (11.7)
Injection site pruritus	0.2	19 (10.6)
Injection site bruising	0.2	18 (10.1)

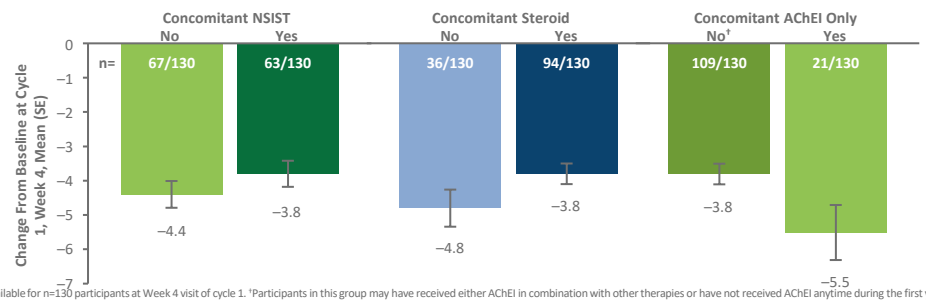
*Event rate was calculated as number of events per total PYFU. †Fatal events (metastatic renal cell cancer, cardiac arrest, pulmonary mass, and COVID-19/respiratory failure) were not related to efgartigimod PH20 SC treatment, as determined by investigators. ‡Treatment discontinuations were due to metastatic renal cell cancer (cycle 1, death), cardiac arrest (cycle 2, death), COVID-19/respiratory failure (cycle 3, death), and MG crisis (cycle 1). §Most frequent TEAEs occurring in >10% of participants receiving efgartigimod PH20 SC.

FIGURE 1 Week 4* MG-ADL Score Change From Baseline by Disease Duration in the AChR-Ab+ Population



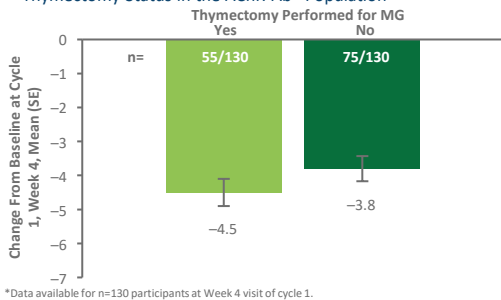
*Data available for n=130 participants at Week 4 visit of cycle 1.

FIGURE 2 Week 4* MG-ADL Score Change From Baseline by Concomitant Therapy in the AChR-Ab+ Population



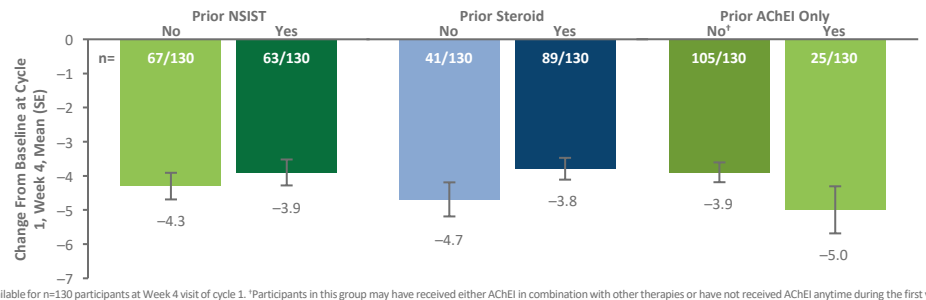
*Data available for n=130 participants at Week 4 visit of cycle 1. †Participants in this group may have received either AChEI in combination with other therapies or have not received AChEI anytime during the first year.

FIGURE 3 Week 4* MG-ADL Score Change From Baseline by Thymectomy Status in the AChR-Ab+ Population



*Data available for n=130 participants at Week 4 visit of cycle 1.

FIGURE 4 Week 4* MG-ADL Score Change From Baseline by Prior Therapy in the AChR-Ab+ Population



*Data available for n=130 participants at Week 4 visit of cycle 1. †Participants in this group may have received either AChEI in combination with other therapies or have not received AChEI anytime during the first year.

KEY TAKEAWAYS

Efgartigimod PH20 SC resulted in consistent improvements in AChR-Ab+ participants across subgroups, including those only receiving AChEIs

Clinical improvements across subgroups were similar to those seen in participants in the ADAPT trial,² reinforcing efgartigimod's efficacy across a broad gMG population

Results in participants with short disease duration and limited/no exposure to prior treatments suggest efgartigimod may be an effective option early in their disease course

The majority of adverse events were mild or moderate with no new safety findings

PRESENTED AT THE 55TH CONGRESS OF THE ITALIAN SOCIETY OF NEUROLOGY (SIN); OCTOBER 24–28, 2025; PADUA, ITALY

ABBREVIATIONS

AChEI, acetylcholinesterase inhibitor; AChR-Ab, acetylcholine receptor antibody; COVID-19, coronavirus disease 2019; ER, event rate; Fc, fragment crystallizable region; FcRn, neonatal Fc receptor; gMG, generalized myasthenia gravis; Ig, immunoglobulin; IgG, immunoglobulin G; IV, intravenous; LDL, low density lipoprotein; MG, myasthenia gravis; MG-ADL, Myasthenia Gravis Activities of Daily Living; MGFA, Myasthenia Gravis Foundation of America; MG-QoL15r, Myasthenia Gravis Quality of Life 15-item Questionnaire, Revised; NSIST, nonsteroidal immunosuppressive therapy; OLE, open-label extension; PH20, recombinant human hyaluronidase PH20 (rhPH20); PYFU, participant years of follow-up (sum of follow-up time of all participants expressed in years in the applicable period); Q, quartile; s, seconds; SC, subcutaneous; SD, standard deviation; TEAE, treatment-emergent adverse event.

DISCLOSURES AND ACKNOWLEDGMENTS

The authors gratefully acknowledge the ADAPT+, ADAPT-SC+, and ADAPT-SC+ trial participants and investigators. SM: Alexion, Amgen, argenx, UCB; LF: Alexion, argenx, Dianthus, UCB; TV: AbbVie, Alexion, Amgen, argenx, AstraZeneca, Cartesian Therapeutics, CSL Behring, Dianthus, ImmunAbs, Immunovant, Janssen, NIH, Regeneron, Sanofi, UCB; EB, RK: Employees: argenx; KU: Alexion, Amgen, argenx, Chugai, Janssen, Japan Blood Products Organization, Mitsubishi Tanabe, UCB; AM: Alexion, argenx, Axunio, Grifols, Hormosan, Janssen, Merck, Novartis, Octapharma, UCB. Medical writing and editorial support for this presentation were provided by Precision IQ and funded by argenx. Previously presented at the 2024 Myasthenia Gravis Foundation of America (MGFA) Annual Meeting, Savannah, Georgia.

REFERENCES

1. Ullrichs P, et al. *J Clin Invest*. 2018;128(10):4372–86. 2. Vaccaro C, et al. *Nat Biotechnol*. 2005;23:1283–8. 3. Howard JF Jr, et al. [published correction appears in *Lancet Neurol*. 2021;20(8):e5.] *Lancet Neurol*. 2021;20(7):526–36. 4. Gupta JJ, et al. *Autoimmunity*. 2022;55(8):620–31. 5. Study ARGX-113-2001 (ADAPT-SC) Clinical Trial Protocol v2.0.02.02 Jul 2021. 6. VYVGART HYTRULO. Prescribing information, argenx; 2024. <https://www.argenx.com/product/vyvgart-hytrulo-prescribing-information.pdf>. Accessed September 2025. 7. Roopenian DC, Akilish S. *Nat Rev Immunol*. 2007;7:715–25. 8. Ward ES, Ober RJ. *Trends Pharmacol Sci*. 2018;39:892–904.

24-28 Ottobre 2025
Padova Congress

55° CONGRESSO
SOCIETÀ ITALIANA
DI NEUROLOGIA